



# showbie

The heart of your paperless classroom.

The background is a dark blue overlay on a photograph of a classroom. In the foreground, a student's hands are visible typing on a laptop. In the background, other students are seated at desks with computers, and a teacher is standing, possibly interacting with them. The overall scene depicts a digital learning environment.

## SHOWBIE

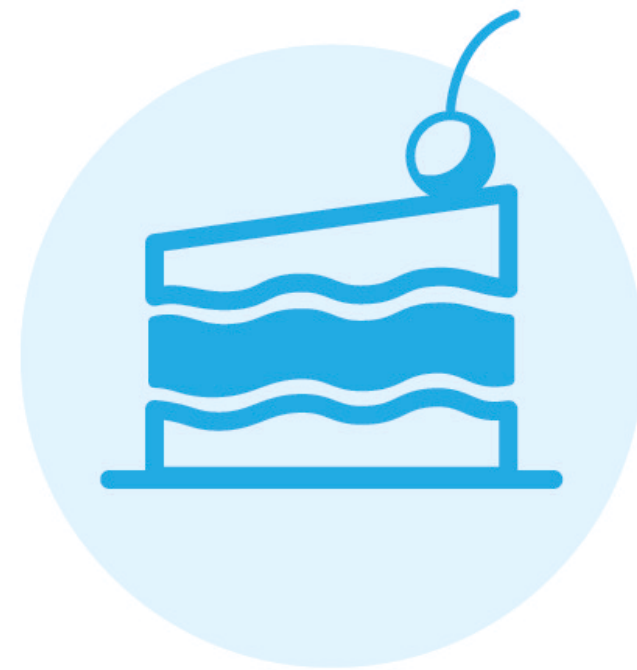
To empower learning communities to achieve and sustain digital transformation at any grade level and subject area.



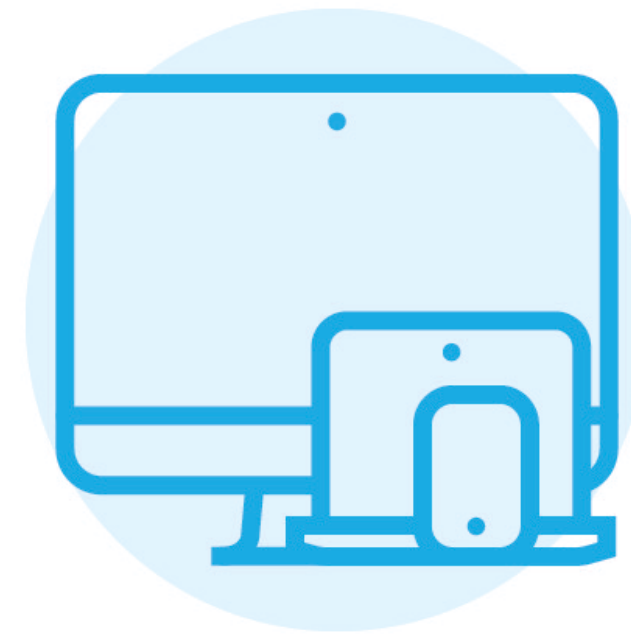
# Showbie Overview



Designed for teachers  
and students first



Easy to set up  
and use



Works on nearly  
any device



Digital literacy  
for all students



Teacher, student and  
parent engagement



Connects with virtually any  
other app (including GAFE!)



No student emails  
necessary



Unlimited cloud  
storage

## EFFICACY SURVEY

91%

My students are more engaged in their learning since using Showbie.

97%

Showbie has helped me provide formative feedback to students on their assignments.

97%

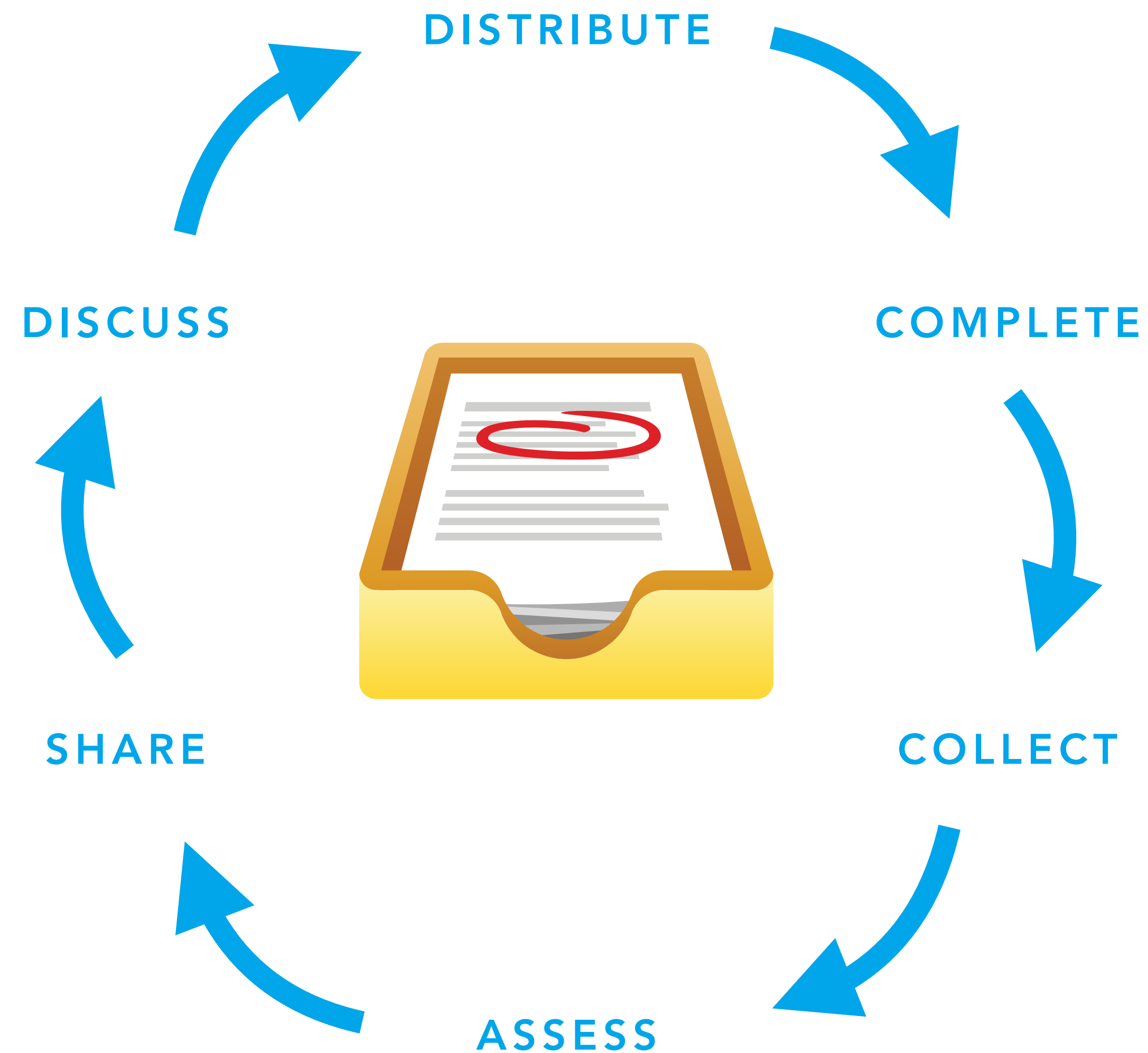
Showbie has helped me provide personalized feedback to students on their work.

99%

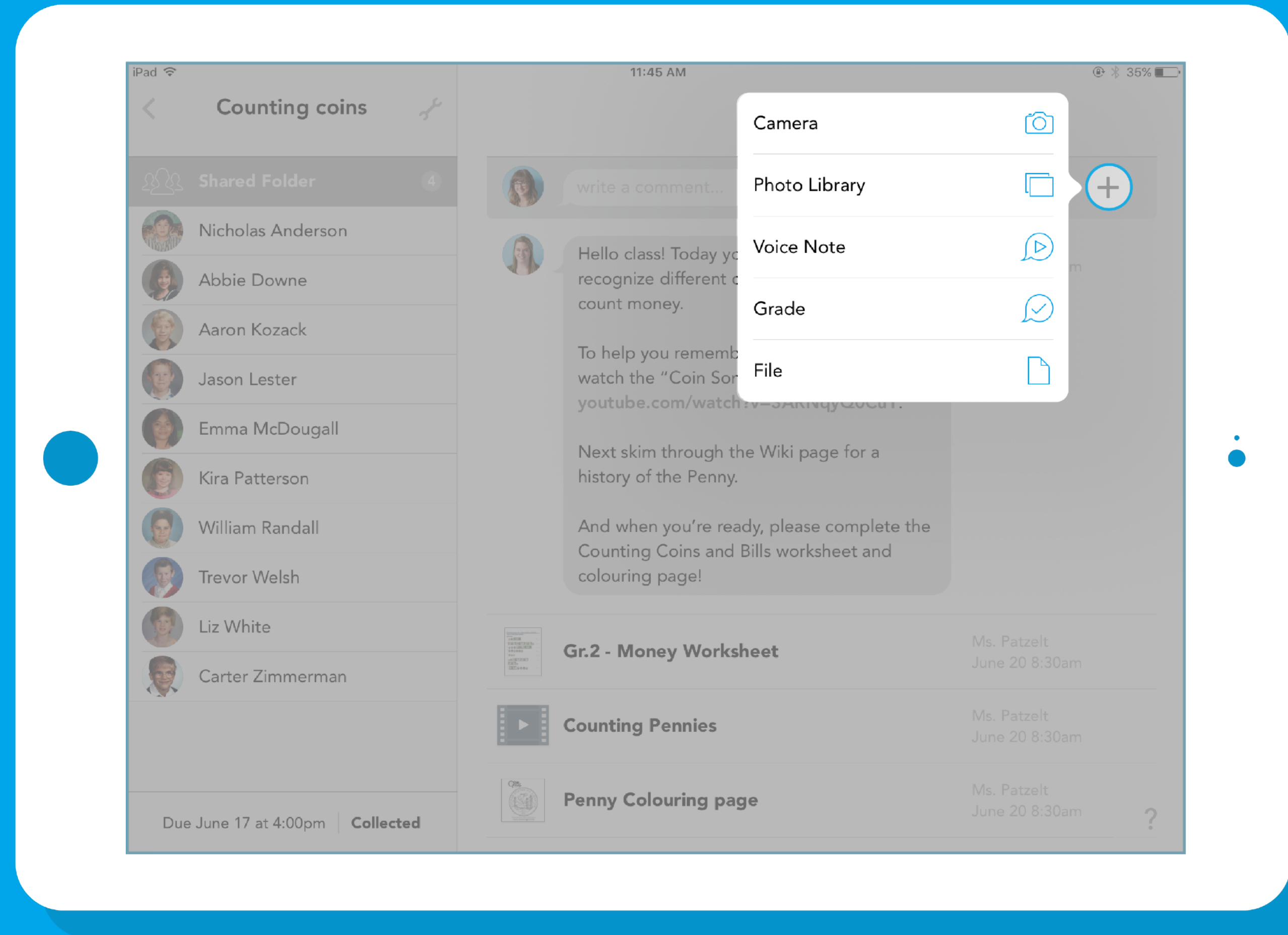
Showbie is easy to use and implement in the classroom.



# The Showbie Cycle of Classroom Engagement



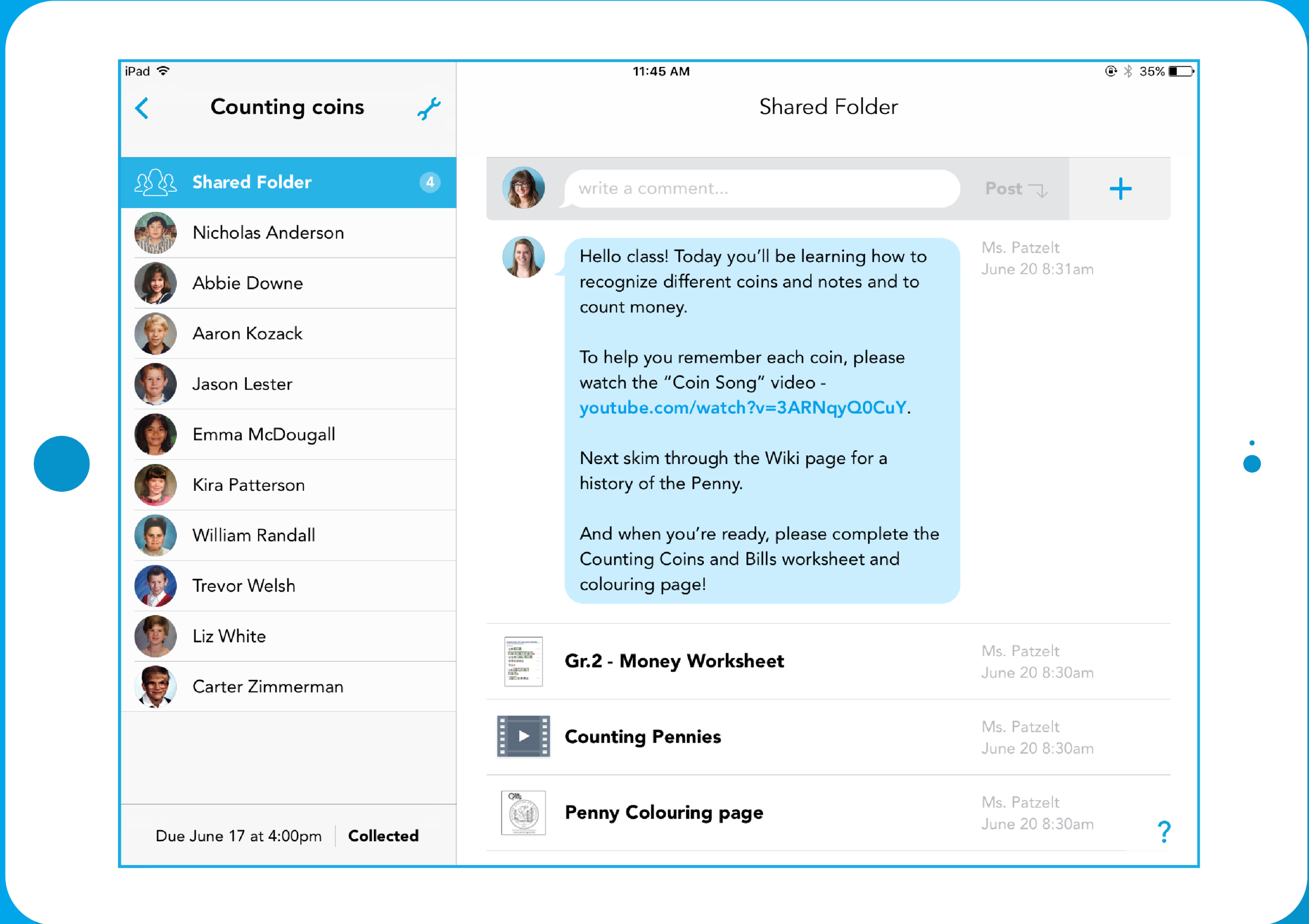
## EXEMPLARS



**Upload** different file types

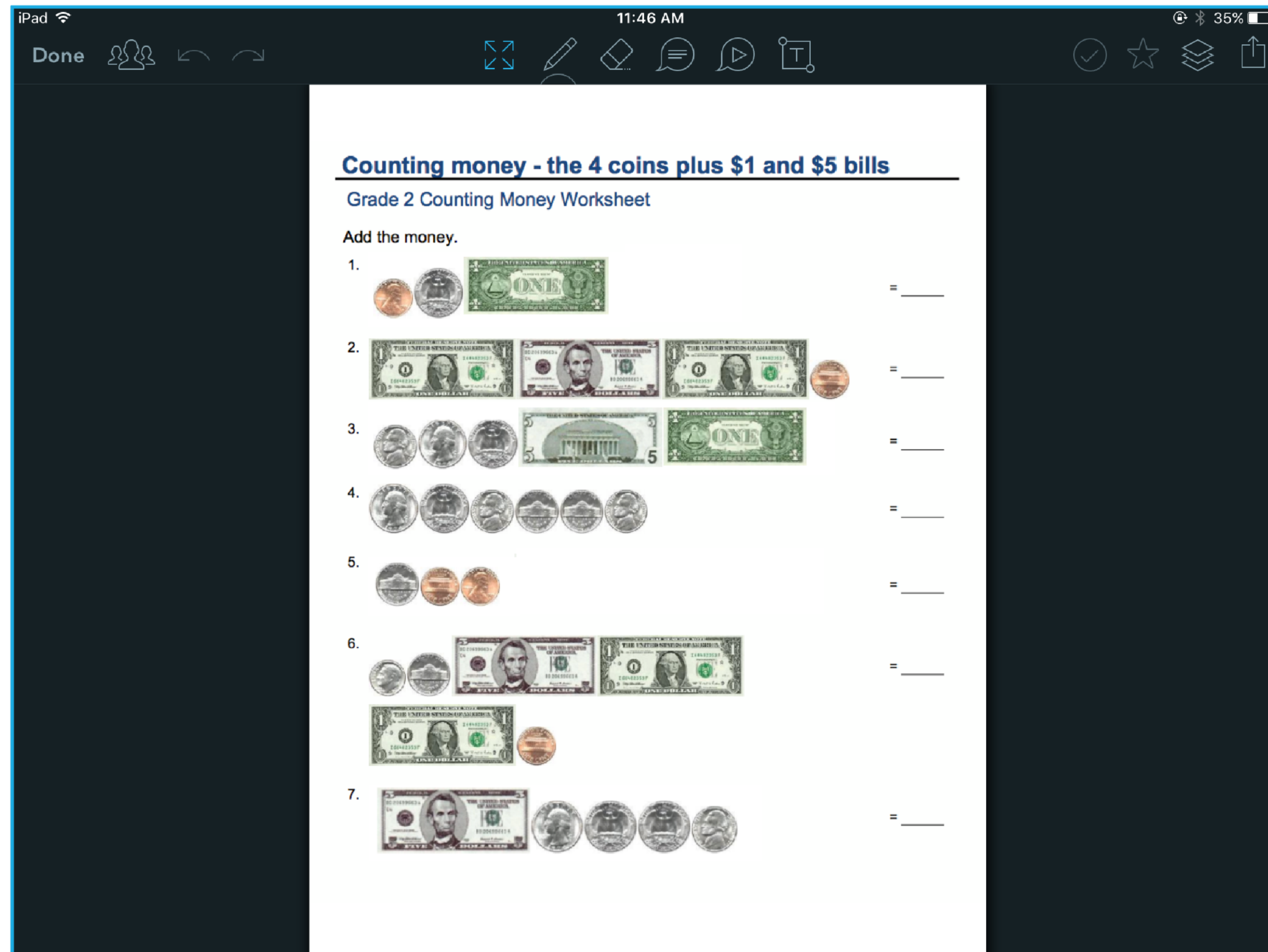


EXEMPLARS



Distribute work to students

## EXEMPLARS



- > Pen tool
- > Comment tool
- > Voice note tool
- > Text tool
- > Grading tool
- > Portfolio

Advanced **annotation** tools



## EXEMPLARS

Counting money - the 4 coins plus \$1 and \$5 bills

Grade 2 Counting Money Worksheet

Add the money.

1. 1.26  
= \$1.06

2. 5 + 2 = \$7.01

3. ✓ \$6.55

4. 25 5 10 10  
= 40¢

5. ✓ 7¢  
= 7¢

6. ✓ \$6.15  
= \$6.15

7. This is a dime, I can tell  
15 GREAT!  
✓ \$5.85  
= \$5.85

- › Pen tool
- › Comment tool
- › Voice note tool
- › Text tool
- › Grading tool
- › Portfolio

Advanced **annotation** tools

## EXEMPLARS

The image shows a tablet interface for a classroom management system. The left pane displays a list of students under the heading 'Basic Algebra'. The right pane shows the details for Emma McDougall's assignment, including feedback comments and a worksheet attachment.

**Basic Algebra**

Student	Score	Status
Shared Folder	2	
Nicholas Anderson	19/20	Completed
Abbie Downe		In Progress
Aaron Kozack	9/20	Completed
Jason Lester		Failed
<b>Emma McDougall</b>	16/20	Completed
Kira Patterson	3/20	Completed
William Randall	20/20	Completed
Trevor Welsh	18/20	Completed
Liz White		In Progress
Carter Zimmerman	20/20	Completed

no due date | **Assigned**

**Emma McDougall's Assignment Folder**

11:53 AM 33%

write a comment... **Post** +

**Assignment Feedback**

Ms. Patzelt just now

Great start! Have a look at this again and review the ones you struggled with - I'm happy to help you.

Ms. Patzelt just now

**16/20**

Ms. Patzelt June 20 11:39am

Please complete the worksheet. Leave a voice note if you have questions! :)

Ms. Patzelt June 20 8:29am

**Basic Algebra Worksheet 1**

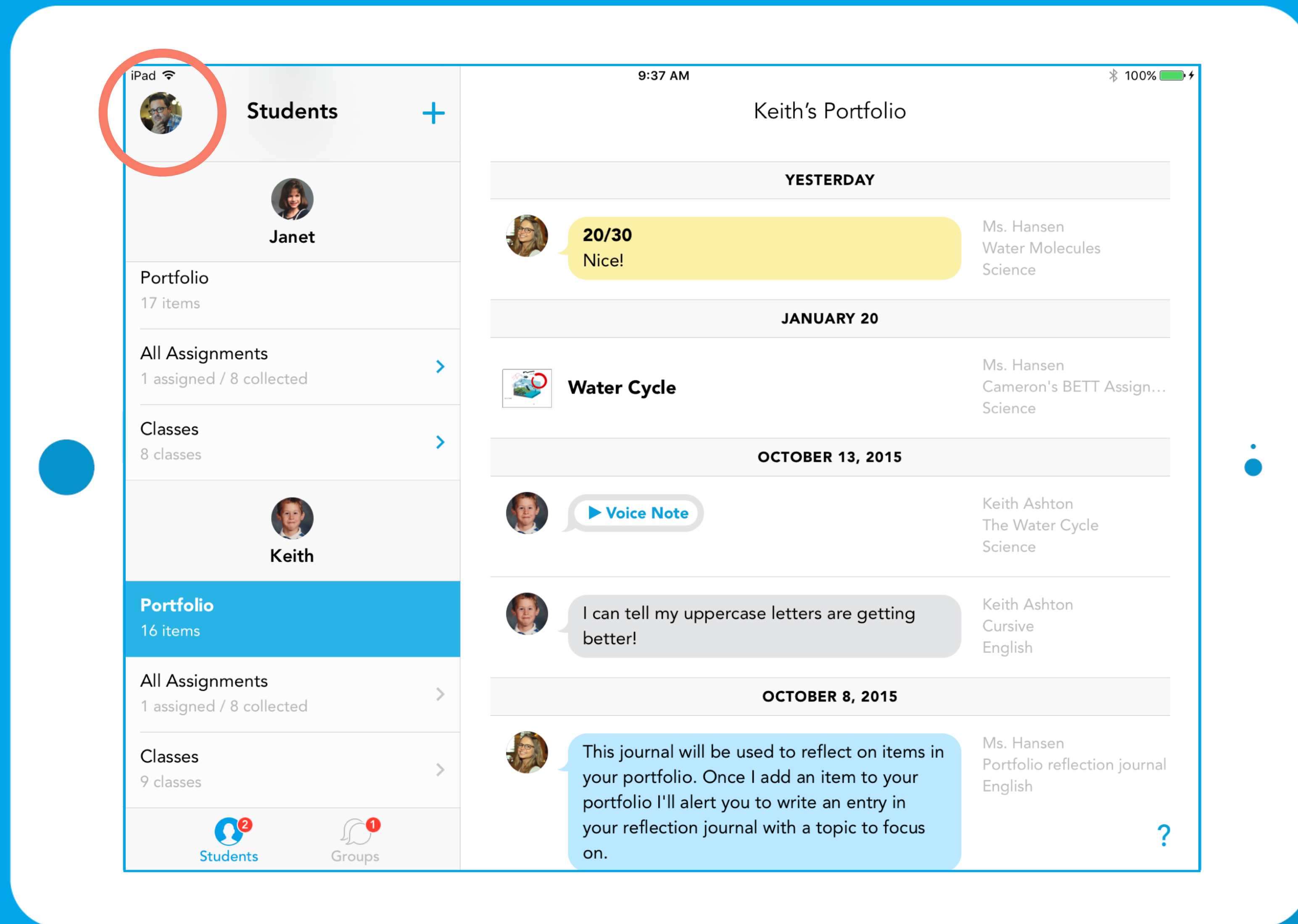
Ms. Patzelt June 20 8:29am

?

**Enriched** communication and feedback

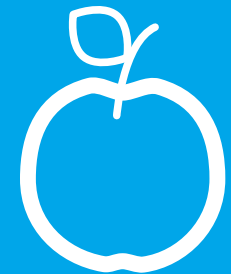


## EXEMPLARS



Keep **parents** in the loop

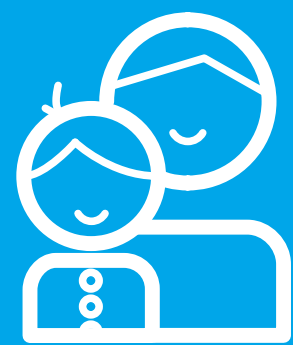
# Showbie Groups



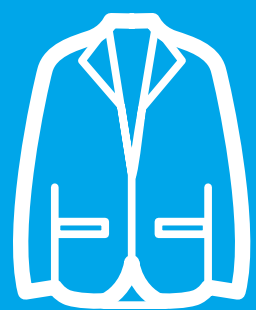
TEACHERS



STUDENTS



PARENTS

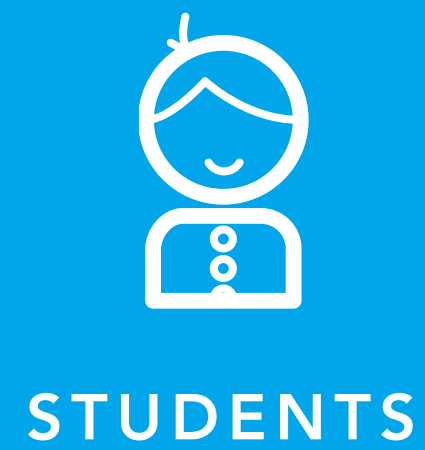


FACULTY

The screenshot displays the Showbie Groups app interface on an iPad. The left pane, titled 'Groups', lists several groups: 'District Faculty' (328 teachers), 'Math Department' (3 teachers), 'Barbecue Club' (2 teachers / 3 parents / 4 students), 'Museum Field Trip' (2 teachers / 22 parents / 16 students), and 'Science 10 - Assignment 2/Group B' (1 teachers / 4 students). The right pane shows the 'Full-time Faculty' group chat. It includes messages from three users, a 'Voice Note' button, and a 'May 15 Meeting Agenda' section. A 'Group Info' overlay is visible on the right, displaying the group name 'District Faculty', a description 'Staff meetings, school policies, and more.', the group code '23GHF', and buttons for 'Group Settings', 'Group Members' (328), and 'Invite Others to Join'. The bottom navigation bar shows icons for 'Classes', 'Groups', and 'Students'.



# Class Discussions



iPad 11:48 AM 95%

**Science**

**Class Discussion**  
paused

**ASSIGNED**

- Butterfly Lifecycle  
no due date 8 12
- Nature Walks  
no due date 2
- Portfolio Reflection  
no due date 3 2
- The Water Cycle  
no due date 7 7

**COLLECTED**

- The Water Cycle  
Due July 7 at 4:00pm

**Class Discussion**

You and your students can share with the class. [Pause Student Posts](#)

write a comment... **Post** +

**Frog Lifecycle Worksheet** Ms. Hansen Sept 13, 2016

- Christy Young Sept 13, 2016  
I want to see if we can spot any tadpoles in the river when we get there. Or even water beetles
- Brinna Shumaker Sept 13, 2016  
I just hope no one slips in the mud 😊
- Janet Rubé Sept 13, 2016  
Maybe we'll find some mushrooms! 🍄
- Christian Ferris Sept 13, 2016  
I'm excited to see if we can find any frogs!
- Ms. Hansen Sept 13, 2016  
Can you each share with me something you're excited to explore?
- Ms. Hansen Sept 13, 2016  
Just a reminder our nature walk is tomorrow. Please remember to bring a jacket and good walking shoes.

**Classes** **Groups** **Students** ?

# Using Apps with Showbie







Questions?





# showbie

[www.showbie.com](http://www.showbie.com)